

EXCLUSIVE
DEALER FOR

JACUZZI® HOT
TUBS

WHISTLER

SQUAMISH

PEMBERTON

SEA TO SKY'S
LARGEST
SHOWROOM

SHOWROOM HOURS

Mon-Fri / 9am to 5pm

Sat / 11am to 5pm



#1-1209 Alpha Lake Rd

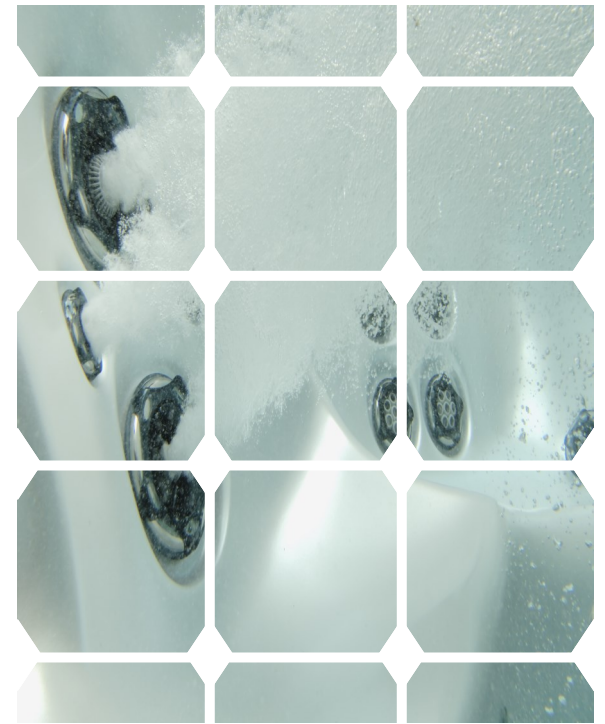
Whistler, BC, VoN 1B1

(604) 932 4616 office

(604) 905 4111 fax

wss@poolsidespaservices.com

www.poolsidespaservices.com



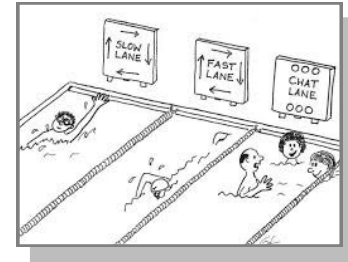
POOL
SERVICE
PLANS



Sign-up today and get a perfectly maintained pool or spa tomorrow!

RESIDENTIAL POOLS

		RATE	SAVINGS
Plan 2A	Twice-a-week (Monday & Thursday) servicing of your pool. This plan has the most value for your money! (8 visits/month) For pools being used multiple times each week.	\$510.00	Save \$370.00
Plan A	Once-a-week servicing of your pool. Great plan for regular weekend pool users.	\$338.00	Save \$102.00
Plan B	Once every two weeks servicing of your pool. This plan is for monitoring and maintaining pools when they are not regularly in use. For off-season and non-usage pools.	\$217.00	



RESIDENTIAL POOLS (w/ HOT TUBS ON SEPARATE PLAN)

Plan 2A	Twice-a-week (Monday & Thursday) servicing of your pool. This plan has the most value for your money! (8 visits/month) For pools being used multiple times each week.	\$379.00	Save \$501.00
Plan A	Once-a-week servicing of your pool, intended for regular weekend pool users.	\$269.00	Save \$171.00



ADDITIONAL POOL SERVICES:

Pool Start-up or Shutdown	\$110.00 per hour
Extra Service Visit (Pool)	\$110.00 per visit*

ADDITIONAL HOT TUB SERVICES

Extra Service Visit (Spa)	\$61.00 (Reg. \$74.00) per visit*
Drain Sanitize, Refill, Balance (DSRB)	\$163.00 (Reg. \$198.00)*

* Discounts are for Service Customers Only



Each service visit includes:
 Water testing and balancing
 Filter Inspection or Backwash
 Pool Vacuum
 Empty Baskets & Balance H2O

**Chemicals are extra and will be sold and stored on site by Poolside as needed.*

Remember:

A properly maintained pool done by professionals will save you money and problems!

Need more flexibility? Call us to customize a plan that is just right for you!